



REAR BAGGER AND POWER FLOW™/14-BUSHEL



ILLUSTRATED PARTS LIST

⚠ WARNING: The Engine Exhaust from this product contains chemicals known to the State of California to cause cancer, birth defects or other reproductive harm.

California Proposition 65 Warning

PC9390 (MAR 04)

North American Version
Litho in U.S.A.

TABLE OF CONTENTS

Introduction	10-1
Jack Sheave, Idlers and Belts	20-2
Blower Housing.....	20-4
Weights (Material Collection System)	30-1
Chute	30-2
Grass Catcher.....	30-3
Hopper Top.....	30-4
Mounting Brackets (Material Collection System)	30-6
Valve.....	30-7

All information, illustrations and specifications in this manual are based on the latest information at the time of publication. The right is reserved to make changes at any time without notice.

COPYRIGHT© 2004

Deere & Co.

John Deere Worldwide Commercial and Consumer Equipment Division

All rights reserved

Previous Editions 2003

COPYRIGHT©

PC9390 (MAR 04) - English

MP31206 -UN-11FEB04



MP31206

REAR BAGGER AND POWER FLOW/14 BUSHEL

WITH 48C MOWER DECK
2004 MODEL (SN GX48CPF010001-)

WITH 52C MOWER DECK
2004 MODEL (SN GX52CPF010001-)

WITH 61C MOWER DECK
2004 MODEL (SN GX61CPF010001-)

(SPECIFICATIONS AND DESIGN SUBJECT TO CHANGE WITHOUT NOTICE)

PRODUCT IDENTIFICATION AND SERIAL NUMBER PLATE

AN INDIVIDUAL PRODUCT IDENTIFICATION AND SERIAL NUMBER IS ASSIGNED TO EACH MACHINE. WHEN WRITING ABOUT OR FILLING OUT WARRANTY CLAIMS, USE ALL THE CHARACTERS SHOWN ON THE PLATE.

EXAMPLE: GX48CPF010001

GX- FACTORY DESIGNATION (GREENVILLE)
48CP- MODEL OR MACHINE DESIGNATION
48-INCH CONVERTIBLE MOWER DECK
F- CONFIGURATION CODE
010001- SERIAL NUMBER

PRODUCT CONFIGURATION CODE

THE CONFIGURATION "ALPHA" CODE IDENTIFIES A VARIATION OF A PRODUCT. (EXAMPLE: A 116 LAWN TRACTOR MAY BE MANUFACTURED AS A HYDROSTATIC OR MANUAL UNIT, AND BE SHIPPED WITH A 970MM OR 1170MM MOWER. FOUR VARIATIONS OF THE 116 LAWN TRACTOR EXIST.)

IT ALSO IDENTIFIES DIFFERENT PRODUCTS WHICH HAVE THE SAME MODEL OR MACHINE DESIGNATION. (EXAMPLE: 216 TRACTOR AND 216 TILLER)

IF NO CONFIGURATION "ALPHA" CODE IS REQUIRED, SPACE IS FILLED IN WITH AN "X".

SERIAL NUMBER LISTING INFORMATION

SERIAL NUMBER INFORMATION IS LISTED TO SHOW ON WHICH MACHINES EACH PART CAN BE USED; FOR EXAMPLE:

- THE PART CAN BE USED ON ALL MACHINES.
- 000000 - THE PART CAN BE USED ON MACHINES BEGINNING WITH THE SERIAL NUMBER LISTED.
- 000000 THE PART CAN BE USED ON MACHINES UP TO AND INCLUDING THE SERIAL NUMBER LISTED.
- 000000 - 000000 THE PART CAN BE USED ON MACHINES BETWEEN AND INCLUDING THE SERIAL NUMBERS LISTED.

WHEN XXXXXX'S ARE LISTED IN PLACE OF A SERIAL NUMBER, A SERIAL NUMBER CHANGE WAS MADE, BUT THE EXACT SERIAL NUMBER WAS NOT AVAILABLE WHEN THE CATALOG WAS PRODUCED.

BOX-ENCLOSED ILLUSTRATIONS

A KEY NUMBER, SHOWN IN THE PARTS LIST, IS ASSIGNED TO A BOX ENCLOSING ALL PARTS SOLD AS A SERVICE ASSEMBLY.

BOLT AND CAP SCREW STRENGTH IDENTIFICATION

BOLTS AND CAP SCREWS REQUIRED TO HAVE HIGH-STRENGTH QUALITIES EQUIVALENT TO SAE GRADE 8 ARE IDENTIFIED THROUGHOUT THIS CATALOG BY THE DESCRIPTION HS SAE 8 (10.9 FOR METRIC). ALL STANDARD BOLTS AND CAP SCREWS ARE SAE GRADE 5 (METRIC 8.8) OR LOWER.

WHOLE GOODS LISTINGS

WHOLE GOODS ARE LISTED IN BOLD FACE TYPE. REFER TO LAWN AND GROUNDS CARE SALES MANUAL FOR WHOLE GOODS ORDERING INFORMATION. ORDER SEPARATELY. DO NOT INCLUDE ON REPLACEMENT PARTS ORDER.

DIRECTION ARROW

ARROWS ARE USED WITH ILLUSTRATIONS TO INDICATE THE FRONT OF THE UNIT. "RIGHT-HAND" AND "LEFT-HAND" SIDES ARE DETERMINED BY FACING IN THE DIRECTION OF MACHINE FORWARD TRAVEL.

TO THE CUSTOMER

THE PART NUMBERS IN THIS PARTS CATALOG WERE CORRECT AT THE TIME THIS CATALOG WAS PUBLISHED. IT IS OUR POLICY TO CONSTANTLY IMPROVE OUR MACHINES; THEREFORE, PART NUMBERS MAY CHANGE WHEN ORDERING PARTS. VERIFY PART NUMBERS THROUGH YOUR DEALER.

ALPHABETICAL INDEX

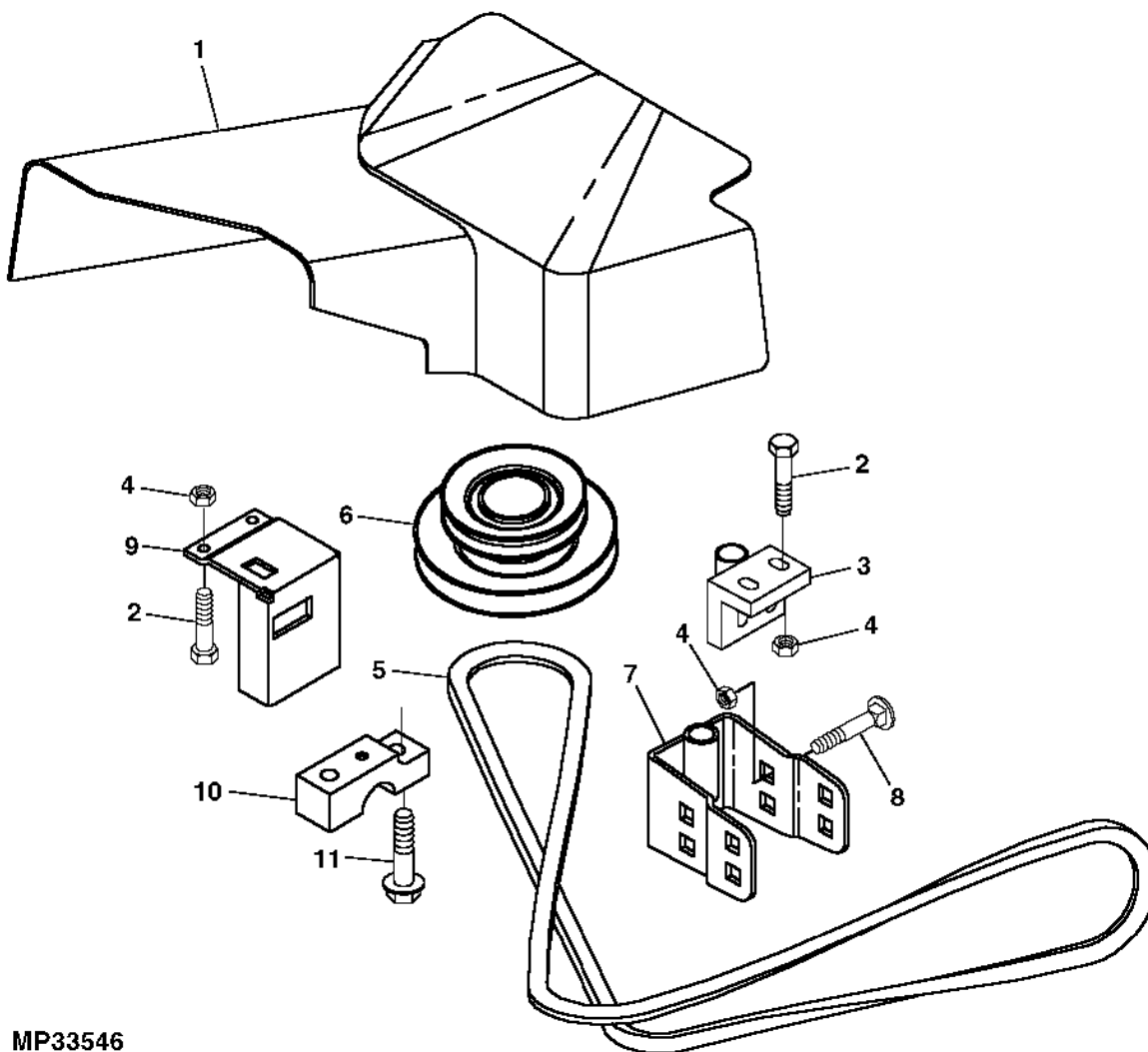
<i>GRID</i>		<i>PAGE</i>	<i>GRID</i>		<i>PAGE</i>
	B			S	
A14	BAGS	30 - 3	A7	SHIELD, BELT	20 - 2
A7	BELT SHIELD.....	20 - 2			
A7	BELT, DRIVE	20 - 2		V	
A9	BLOWER COVER	20 - 4	A18	VALVE, RELIEF	30 - 7
A9	BLOWER HOUSING	20 - 4			
	C			W	
A13	CHUTE	30 - 2	A12	WEIGHTS	30 - 1
A9	COVER, BLOWER	20 - 4			
	D				
A17	DEFLECTOR, EXHAUST.....	30 - 6			
A7	DRIVE BELT.....	20 - 2			
	E				
A17	EXHAUST DEFLECTOR	30 - 6			
	F				
A9	FAN, BLOWER.....	20 - 4			
A13	FILL INDICATOR	30 - 2			
A15	FRAME, HOPPER	30 - 4			
	G				
A14	GRASS CATCHER.....	30 - 3			
	H				
A15	HOPPER FRAME.....	30 - 4			
A15	HOPPER TOP	30 - 4			
A9	HOUSING, BLOWER	20 - 4			
	I				
A13	INDICATOR, FILL.....	30 - 2			
	M				
A17	MOUNTING BRACKETS	30 - 6			
	P				
A7	PULLEY	20 - 2			
	R				
A18	RELIEF VALVE	30 - 7			

MEMORANDA

A7

POWER FLOW

JACK SHEAVE, IDLERS AND BELTS
MP33546 -UN-25FEB04



MP33546

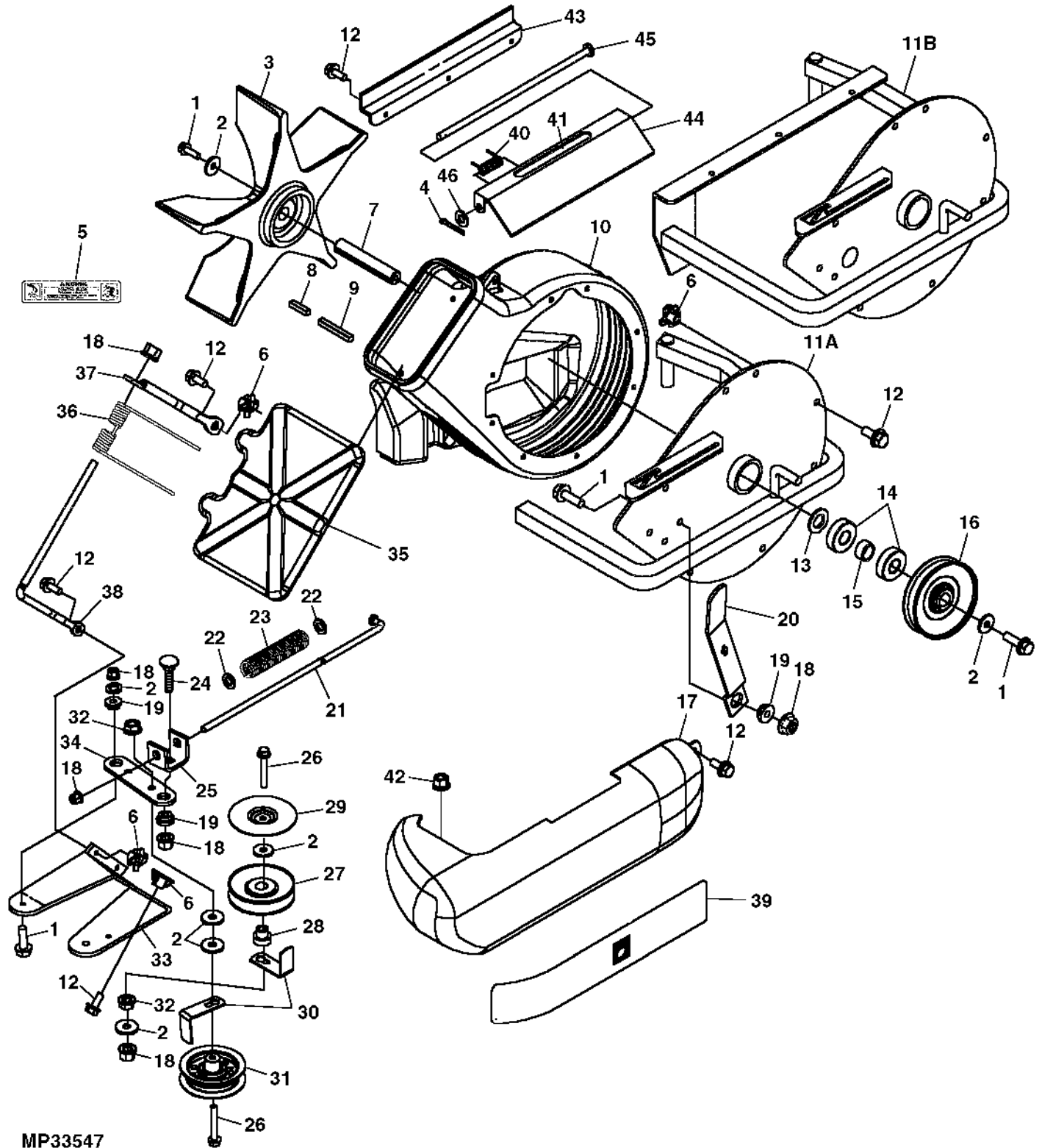
JACK SHEAVE, IDLERS AND BELTS (CONTINUED)

KEY	PART NO.	PART NAME	QTY	SERIAL NO.	REMARKS
1	TCU18834	SHIELD	1	48-INCH	
	TCU18810	SHIELD	1	52-INCH	
	TCU18844	SHIELD	1	61-INCH (SHOWN)	
2	19M7785	SCREW	4	M10 X 25	
3	TCA15212	PLATE	1	48 AND 52-INCH	
4	14M7400	LOCK NUT	8	M10	
5	TCU18842	V-BELT	1	48 AND 52-INCH	
	M112490	V-BELT	1	61-INCH	
6	TCA15132	PULLEY	1	48-INCH	
	TCA15134	PULLEY	1	52-INCH	
	TCA15134	PULLEY	1	61-INCH	
7	TCA15185	BRACKET	1	(61-INCH ONLY)	
8	03M7191	BOLT	4	M10 X 25 (61-INCH ONLY)	
9	TCA15194	BRACKET	1	MCS MOUNT (61-INCH ONLY)	
10	TCU19023	SUPPORT	1	DECK LIFT LINK (48-INCH ONLY)	
11	19M7897	SCREW	1	M8 X 35	

A9

POWER FLOW

BLOWER HOUSING
MP33547 -UN-25FEB04



MP33547

A10

POWER FLOW

BLOWER HOUSING (CONTINUED)

KEY	PART NO.	PART NAME	QTY	SERIAL NO.	REMARKS
1	19M7800	SCREW	4	M8 X 50	
2	24M7024	WASHER	7	9 X 28 X 3 MM	
3	M144110	BLOWER FAN	1		
4	11M7021	COTTER PIN	1	4 X 25 MM	
5	M118454	LABEL	1	WARNING	
6	M112447	NUT	14		
7	M144683	SHAFT	1		
8	M133474	SHAFT KEY	1	5X38	
9	49M6496	SHAFT KEY	1	5X22	
10	TCU18667	HOUSING	1	48 AND 52-INCH	
	TCU18669	HOUSING	1	61-INCH	
11A	TCA15149	COVER	1	BLOWER, 48 AND 52-INCH	
11B	TCA15151	COVER	1	BLOWER, 61-INCH	
12	M140225	SCREW	17		
13	24M7051	WASHER	1	21 X 37 X 3 MM	
14	JD7142	BALL BEARING	2		
15	28H1885	BUSHING	1		
16	AM121832	PULLEY	1		
17	TCU19211	SHIELD	1	48 AND 52-INCH	
	TCU19210	SHIELD	1	61-INCH	
18	14M7396	LOCK NUT	9	M8	
19	M110316	BUSHING	3		
20	M144500	LEVER	1		
21	M144501	PIN FASTENER	1		
22	24M7095	WASHER	2	8.400 X 15 X 1.600 MM	
23	M146119	COMPRESSION SPRING	1		
24	03M7185	BOLT	1	M8 X 25	
25	M144494	CLEVIS	1	TENSION PIVOT	
26	19M7979	SCREW	2	M8 X 55	
27	AM118447	IDLER	1		
28	M71682	BUSHING	1		
29	M147446	WASHER	1		
30	TCU15034	BRACKET	2		
31	AM128189	IDLER	1		
32	14M7298	FLANGE NUT	2	M8	
33	M144490	BRACKET	1	IDLER MOUNTING	
34	M144493	ARM	1	IDLER PIVOT	
35	M145493	COVER	1		
36	M145519	TORSION SPRING	1		
37	M145496	HINGE	1		
38	M145495	HINGE	1		
39	TCU19108	LABEL	1		
40	TCU19046	SPRING	1		
41	M131748	LABEL	1	DANGER	
42	14M7397	LOCK NUT	4	M6	
43	TCU18795	SPACER	1		
44	TCA15379	COVER	1	DISCHARGE, W/DECAL (48 AND 51-INCH)	
	TCA15380	COVER	1	DISCHARGE, W/DECAL (61-INCH)	
45	TCU18979	PIN	1	PIVOT, 48 AND 52-INCH	
	TCU18976	PIN	1	PIVOT, 61-INCH	
46	24M7096	WASHER	1	10.500 X 18 X 1.600 MM	

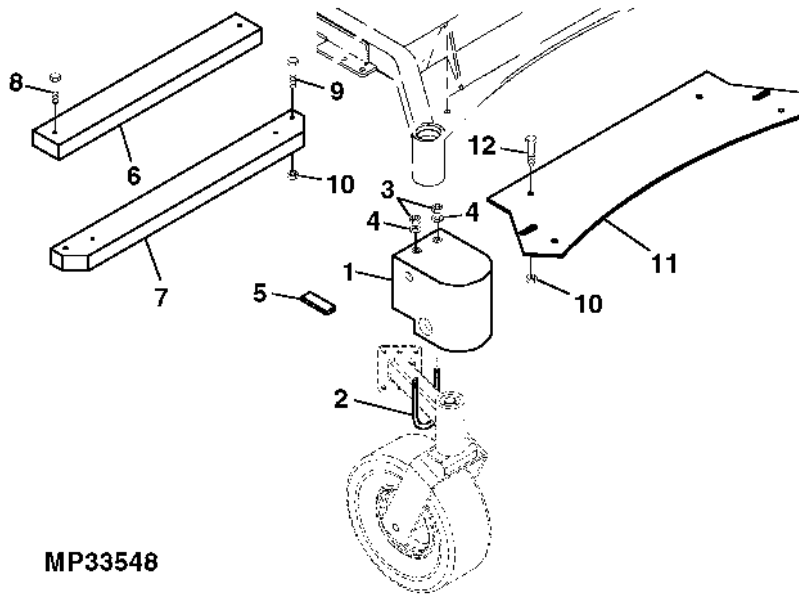
MEMORANDA

A12

14 BUSHEL REAR BAGGER

WEIGHTS (MATERIAL COLLECTION SYSTEM)

MP33548 -UN-03FEB04



MP33548

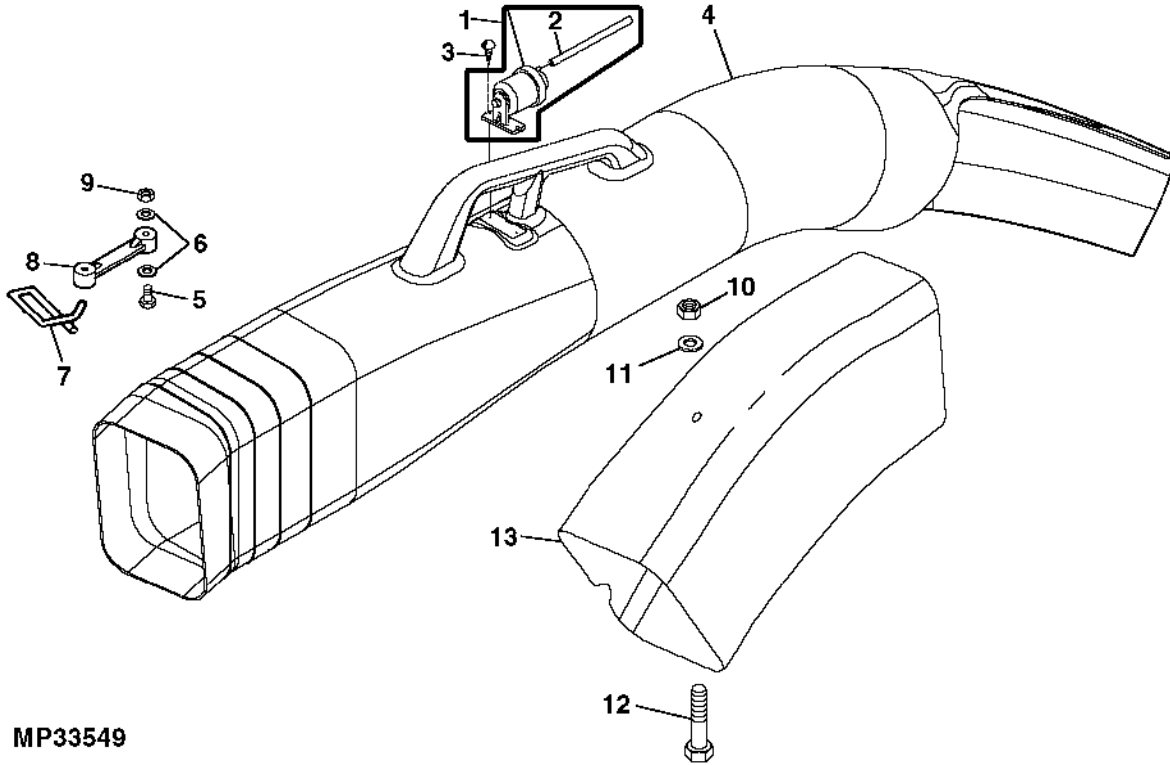
KEY	PART NO.	PART NAME	QTY	SERIAL NO.	REMARKS
1	TCU16128	WEIGHT	2		
2	N231578	U-BOLT	2		
3	E54809	LOCK NUT	4		12.700 MM
4	24M7180	WASHER	4		13 X 37 X 3 MM
5	TCU19075	SPACER	2		(CHARIOT ONLY, NOT REQUIRED ON LX)
6	TCU19076	WEIGHT	1		32 LB
7	TCU19077	WEIGHT	1		36 LB
8	19M8277	BOLT	2		M12 X 25
9	19M7811	SCREW	2		M10 X 90 (48 AND 52-INCH)
	19M7809	SCREW	2		M10 X 70 (61-INCH)
10	14M7400	LOCK NUT	4		M10
11	TCU19092	WEIGHT	1		(48-INCH)
	WEIGHT	2		(52-INCH)
12	19M8320	SCREW	2		M10 X 45

A13

14 BUSHEL REAR BAGGER

CHUTE
MP33549

-UN-11FEB04



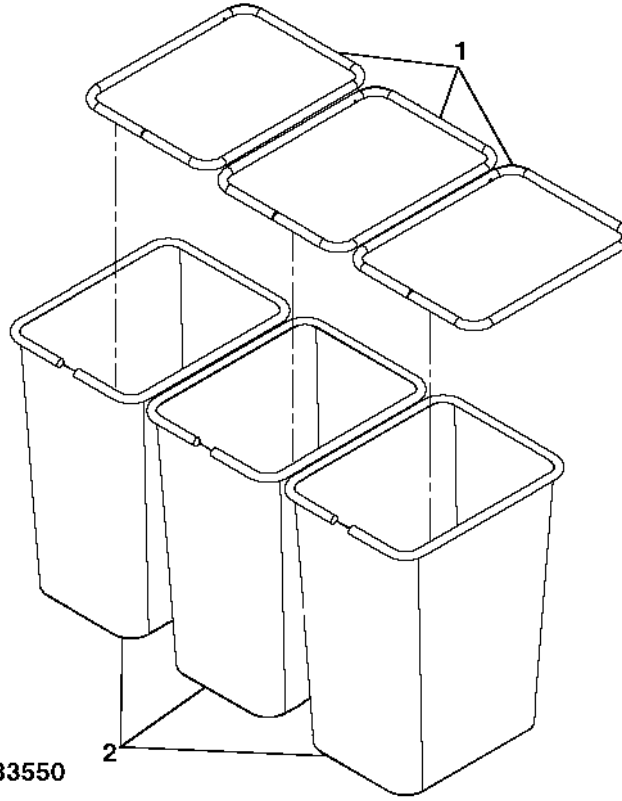
MP33549

KEY	PART NO.	PART NAME	QTY	SERIAL NO.	REMARKS
1	AM131475	INDICATOR	1		FILL, KIT
2	HOSE	1		HOSE COMES AS PART OF FILL KIT
3	M123494	SCREW	2		
4	M144515	CHUTE	1		
5	21H1356	SCREW	1		0.190" X 1-1/4"
6	24H1283	WASHER	2		7/32" X 1/2" X 0.049"
7	M67100	HOOK	1		
8	M67099	STRAP	1		
9	M63662	LOCK NUT	1		
10	14M7450	FLANGE NUT	4		M5
11	24M7027	WASHER	4		5.300 X 10 X 1 MM SERRATED
12	21M7022	SCREW	4		M5 X 20
13	TCU18144	ADAPTER	1		CHUTE

A14

14 BUSHEL REAR BAGGER

GRASS CATCHER
MP33550 -UN-22JAN04



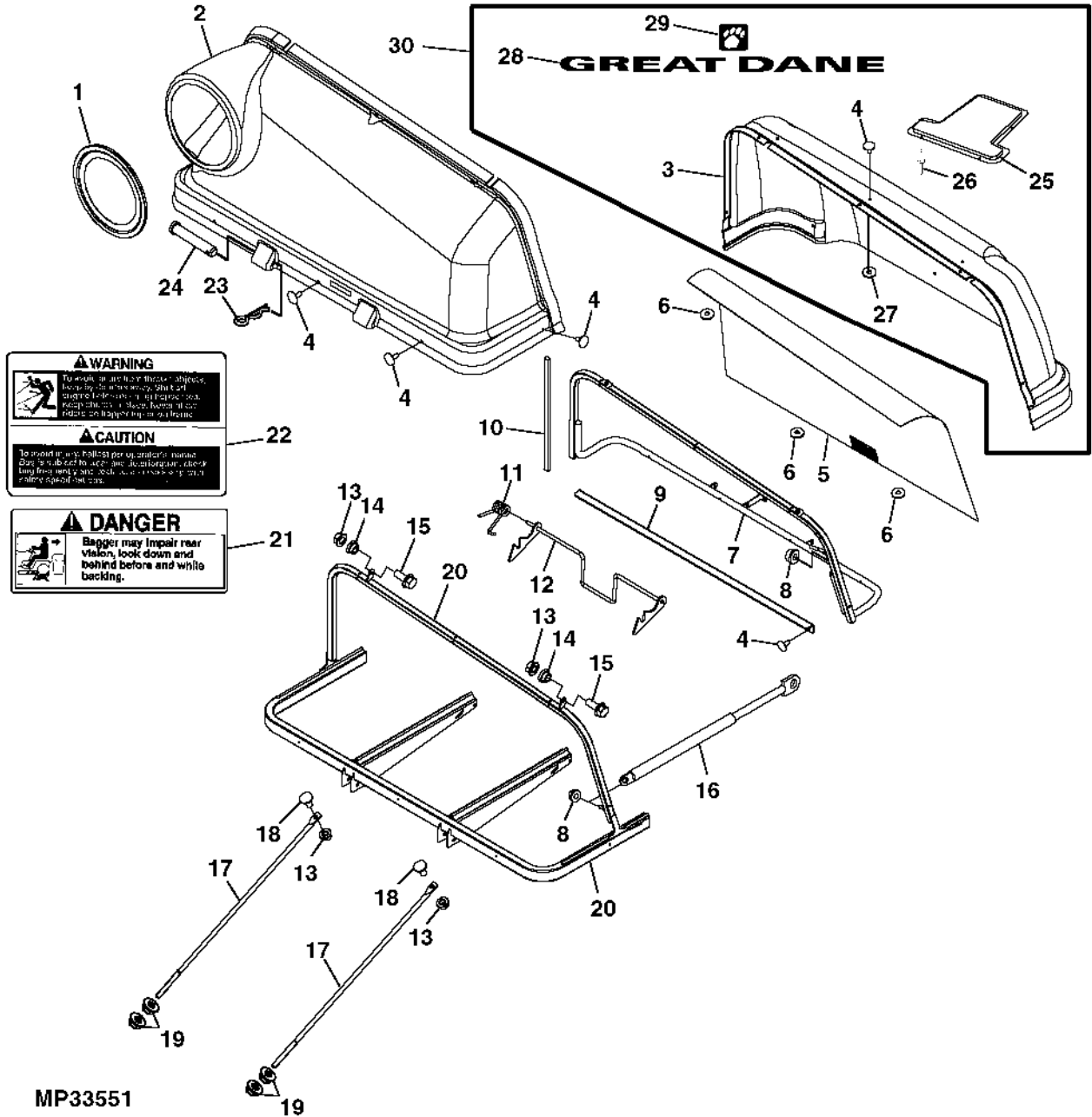
MP33550

KEY	PART NO.	PART NAME	QTY	SERIAL NO.	REMARKS
1	M14443BLE	FRAME	3		
2	M144477	BAG	3		

A15

14 BUSHEL REAR BAGGER

HOPPER TOP
MP33551 -UN-11FEB04



A16

14 BUSHEL REAR BAGGER

HOPPER TOP (CONTINUED)

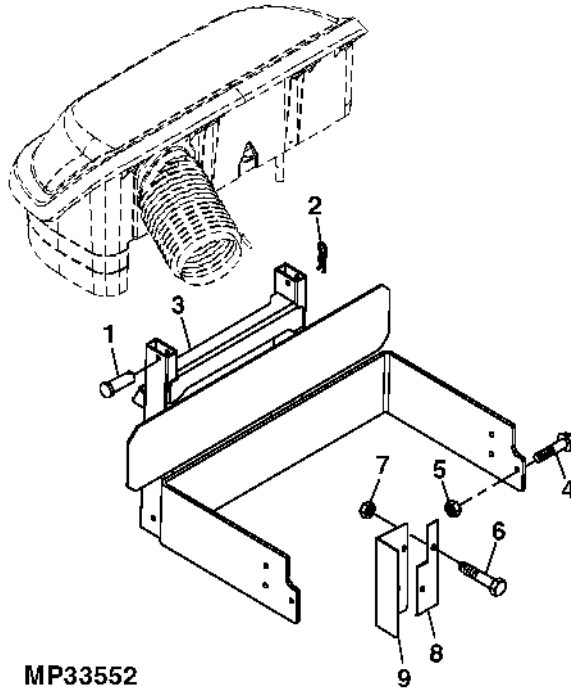
KEY	PART NO.	PART NAME	QTY	SERIAL NO.	REMARKS
1	M145337	SEAL	1		
2	M144583	COVER	1		
3	TCU18808	COVER	1		
4	M68628	RIVET	25		
5	M145364	SCREEN	1		
6	24H1283	WASHER	5		7/32" X 1/2" X 0.049"
7	AM131066	FRAME	1		HOPPER HATCH
8	M146387	PUSH NUT	2		
9	M145677	RAIL	1		
10	M145541	SEAL	1		
11	M145190	TORSION SPRING	1		
12	AM131130BLE	LOCK	1		
13	14M7298	FLANGE NUT	4		M8
14	M127459	BUSHING	2		
15	19M7866	SCREW	2		M8 X 20
16	AM131807	GAS OPERATED CYLINDER	1		
17	TCU18807	ROD	2		REINFORCEMENT
18	03M7183	BOLT	2		M8 X 16
19	14M7296	FLANGE NUT	4		M10
20	AM130926	FRAME	1		HOPPER
21	M146238	LABEL	1		WARNING (BACK OVER)
22	M146356	LABEL	1		WARNING (THROWN OBJECT)
23	J16931	SPRING LOCKING PIN	2		
24	M43649	PIN FASTENER	2		
25	TCU19078	COVER	1		MCS HOPPER
26	M68628	RIVET	9		
27	24H1722	WASHER	9		7/32" X 5/8" X 0.065"
28	TCU19099	LABEL	1		GREAT DANE
29	TCU19100	LABEL	1		PAW
30	TCA15331	COVER	1		

A17

14 BUSHEL REAR BAGGER

MOUNTING BRACKETS (MATERIAL COLLECTION SYSTEM)

MP33552 -UN-03FEB04



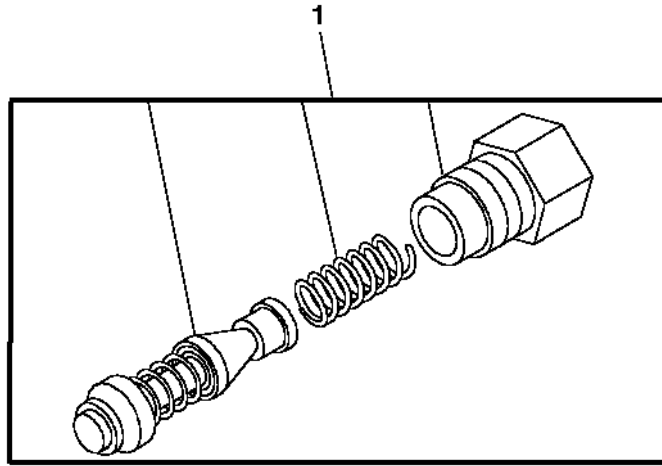
MP33552

KEY	PART NO.	PART NAME	QTY	SERIAL NO.	REMARKS
1	M43649	PIN FASTENER	2		
2	J16931	SPRING LOCKING PIN	2		
3	TCA15143	BRACKET	1		
4	19M7835	SCREW	6	M10 X 35	
5	14M7400	LOCK NUT	6	M10	
6	19M7862	SCREW	2	M6 X 20	
7	14M7397	LOCK NUT	2	M6	
8	TCU16312	BRACKET	1		
9	TCU18964	DEFLECTOR	1	EXHAUST	

A18

14 BUSHEL REAR BAGGER

RELIEF VALVE
MP33553 -UN-22JAN04



MP33553

KEY	PART NO.	PART NAME	QTY	SERIAL NO.	REMARKS
1	TCA14686	KIT	1		RELIEF VALVE

MEMORANDA

L25

GREAT DANE REAR BAGGER POWER FLOW/14-BUSHEL

NUMERICAL INDEX

PART NO.	GRID	KEY	PAGE	PART NO.	GRID	KEY	PAGE	PART NO.	GRID	KEY	PAGE
AM118447	A10	27	20-5	TCU15034	A10	30	20-5				
AM121832	A10	16	20-5	TCU16128	A12	1	30-1				
AM128189	A10	31	20-5	TCU16312	A17	8	30-6				
AM130926	A16	20	30-5	TCU18144	A13	13	30-2				
AM131066	A16	7	30-5	TCU18667	A10	10	20-5				
AM131130BLE	A16	12	30-5	TCU18669	A10	10	20-5				
AM131475	A13	1	30-2	TCU18795	A10	43	20-5				
AM131807	A16	16	30-5	TCU18807	A16	17	30-5				
E54809	A12	3	30-1	TCU18808	A16	3	30-5				
JD7142	A10	14	20-5	TCU18810	A8	1	20-3				
J16931	A16	23	30-5	TCU18834	A8	1	20-3				
J16931	A17	2	30-6	TCU18842	A8	5	20-3				
M110316	A10	19	20-5	TCU18844	A8	1	20-3				
M112447	A10	6	20-5	TCU18964	A17	9	30-6				
M112490	A8	5	20-3	TCU18976	A10	45	20-5				
M118454	A10	5	20-5	TCU18979	A10	45	20-5				
M123494	A13	3	30-2	TCU19023	A8	10	20-3				
M127459	A16	14	30-5	TCU19046	A10	40	20-5				
M131748	A10	41	20-5	TCU19075	A12	5	30-1				
M133474	A10	8	20-5	TCU19076	A12	6	30-1				
M140225	A10	12	20-5	TCU19077	A12	7	30-1				
M144110	A10	3	20-5	TCU19078	A16	25	30-5				
M14443BLE	A14	1	30-3	TCU19092	A12	11	30-1				
M144477	A14	2	30-3	TCU19099	A16	28	30-5				
M144490	A10	33	20-5	TCU19100	A16	29	30-5				
M144493	A10	34	20-5	TCU19108	A10	39	20-5				
M144494	A10	25	20-5	TCU19210	A10	17	20-5				
M144500	A10	20	20-5	TCU19211	A10	17	20-5				
M144501	A10	21	20-5								
M144515	A13	4	30-2								
M144583	A16	2	30-5								
M144683	A10	7	20-5								
M145190	A16	11	30-5								
M145337	A16	1	30-5								
M145364	A16	5	30-5								
M145493	A10	35	20-5								
M145495	A10	38	20-5								
M145496	A10	37	20-5								
M145519	A10	36	20-5								
M145541	A16	10	30-5								
M145677	A16	9	30-5								
M146119	A10	23	20-5								
M146238	A16	21	30-5								
M146356	A16	22	30-5								
M146387	A16	8	30-5								
M147446	A10	29	20-5								
M43649	A16	24	30-5								
M43649	A17	1	30-6								
M63662	A13	9	30-2								
M67099	A13	8	30-2								
M67100	A13	7	30-2								
M68628	A16	4	30-5								
M68628	A16	26	30-5								
M71682	A10	28	20-5								
N231578	A12	2	30-1								
TCA14686	A18	1	30-7								
TCA15132	A8	6	20-3								
TCA15134	A8	6	20-3								
TCA15143	A17	3	30-6								
TCA15149	A10	11A	20-5								
TCA15151	A10	11B	20-5								
TCA15185	A8	7	20-3								
TCA15194	A8	9	20-3								
TCA15212	A8	3	20-3								
TCA15331	A16	30	30-5								
TCA15379	A10	44	20-5								
TCA15380	A10	44	20-5								