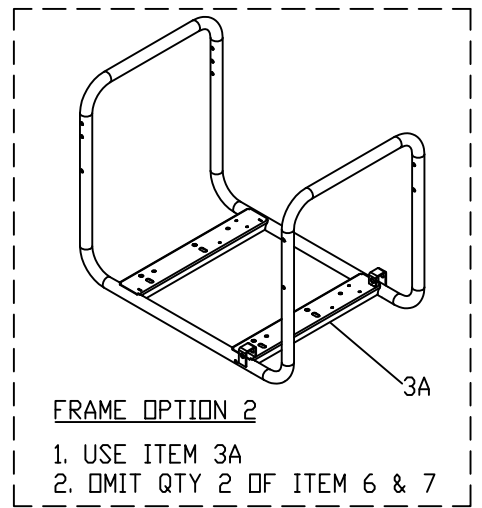
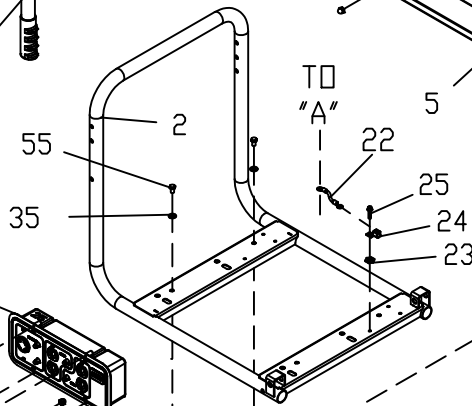
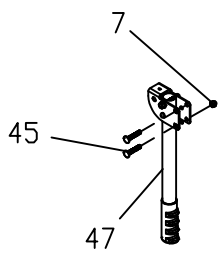
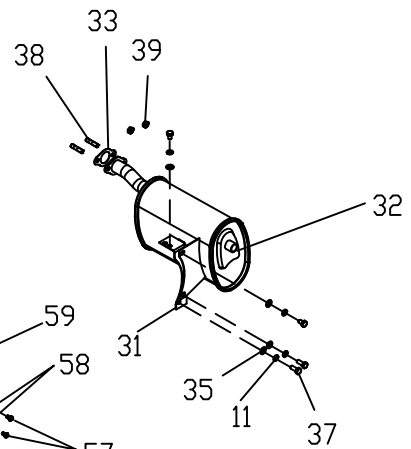
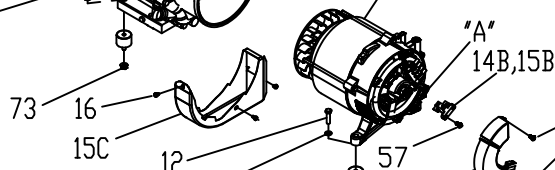
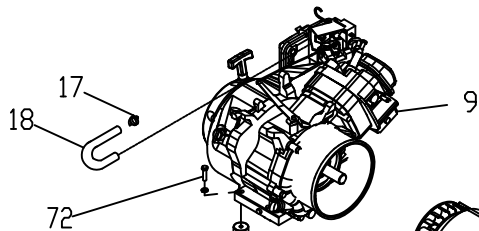
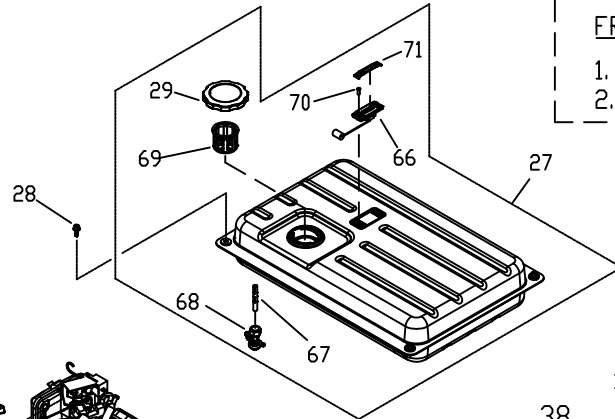


CONTROL PANEL DETAIL

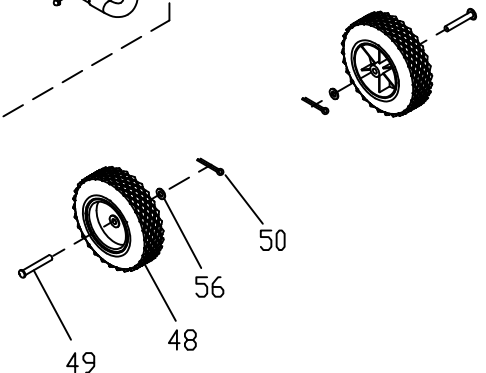
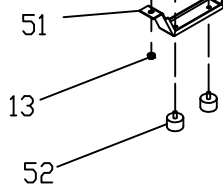
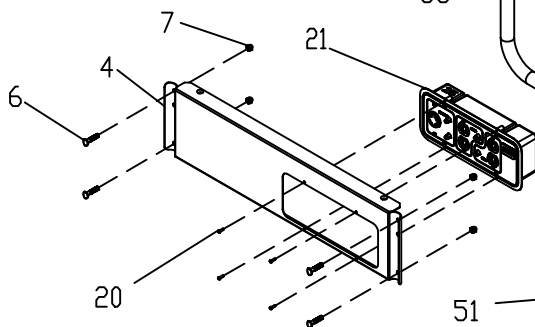


FRAME OPTION 2

1. USE ITEM 3A
2. OMIT QTY 2 OF ITEM 6 & 7



TO
"A"



OMIT FOR
FRAME OPTION 2

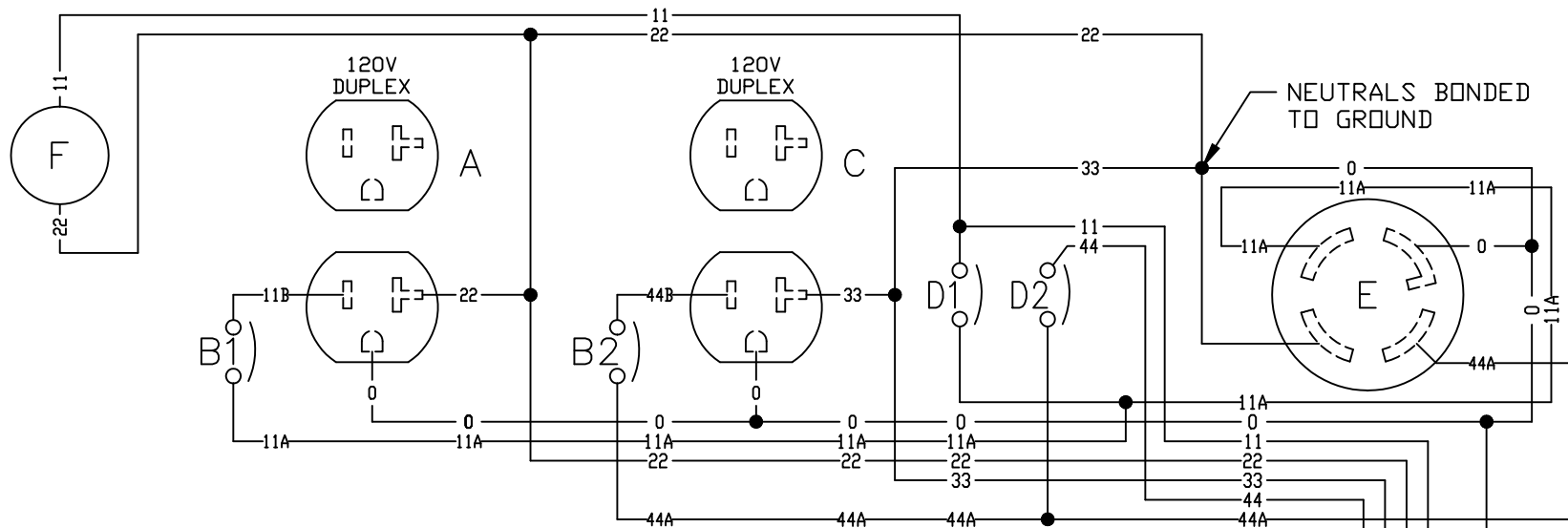
EXPLODED VIEW: GP 5.0kW PORTABLE
DRAWING #: 0H1244

GROUP

APPLICABLE TO: 005622-1

ITEM	PART #	QTY	DESCRIPTION	ITEM	PART #	QTY	DESCRIPTION
2	0H0168	1	ASSY, CRADLE BASE	49	0H0204	2	AXLE PIN, 1/2" X 4"
3	0G8326	1	CRADLE END	50	0D4999	2	COTTER PIN, 1/8" X 1-1/4"
3A	0H1792	1	ASSY, FRAME 1-PIECE	51	0H1114	1	FRAME BENT FOOT
4	0G8327	1	PANEL RAIL	52	0H1829	2	RUBBER FOOT, M8-1.25
5	0G8328	1	BACK RAIL	55	42907	2	SCREW, HHC M8-1.25 X 16
6	0H1780	10	CURVED HEAD BOLT, M8-1.25X42	56	0H1814	2	WASHER, FLAT 13mm
7	0H1782	12	CAP NUT LOCKING M8-1.25	57	091526	5	SCREW, PPHM M5-0.8 x 12
9	0G8442	1	ENGINE, 389cc W/OUT MUFFLER	58	049226	2	WASHER, LOCK M5
10	0H1783	4	VIB MOUNT, RUBBER M8-1.25	59	0H3049	1	COVER, ALTERNATOR INLET
11	022129	8	WASHER, LOCK M8-5/16	60	0G8758	1	OUTLET, 30A 120/250V
12	042909	2	SCREW, HHC M8-1.25 X 30	61	0H0265D	2	CB, 25A 1P 120V CUL/CSA
13	052858	4	NUT, LOCK FLANGE AM8-1.25	62	0G9756	1	RECEPTACLE PANEL
14	0G9899	1	ALTERNATOR	63	0G8507	2	OUTLET, 20A 120V DUPLEX
14A	0G98990101	*	AVR OR 0G9899 & 0H0491	64	0H0265C	2	CB, 20A 1P 120V CUL/CSA
14B	0G98990103	*	BRUSH-ALTERNATOR	65	0G8321	1	HOUR METER
15	0G9924	1	ALTERNATOR	66	0H1345A	1	FUEL GAGE, 90MM LONG ARM
15A	0G99240101	*	AVR FOR 0G9924	67	0H1613	1	FILTER, FUEL VALVE
15B	0G99240102	*	BRUSH-ALTERNATOR	68	0H1684	1	VALVE, FUEL SHUTOFF
15C	0G8654	1	SCROLL, ALTERNATOR	69	0H1326	1	FUEL FILTER
16	0E5845	3	SCREW, HHC M5-08 X 8	70	0H1357	2	SCREW, PFHM M5-0.8 X 12
17	0C7649	1	CLAMP, HOSE .38-.87	71	0H1359	1	PLATE, FUEL GAGE
18	0G9757	1	FUEL HOSE, 4mm ID, 8.5mm OD	72	039414	2	SCREW HHC M8-1.25 X 35 C8.8
20	0G8382	4	SCREW, PPPH #8-16 x 1/2"	73	067989	4	NUT HEX FL WHIZ M8-1.25
21	0G9776D	1	ASSY, RECP PANEL 25A				
22	0G8753C	1	ASSY, GND WIRE ALT TO BASE				
23	0A1658	1	WASHER, LOCK SPECIAL 1/4"				
24	055414	1	LUG, SOLDERLESS #2-#8 X 17/64"				
25	092079	1	SCREW, HHTT M6-1.0 X 25				
27	0G8430	1	ASSY, FUEL TANK 6.6 GALLON				
28	0G5445	4	SCREW, HHTT M8-1.25 X 20				
29	0H1325A	1	FUEL CAP, VENTED				
30	0G8713	1	SHIELD, HEAT 5-6.5KW				
31	0G8542	1	BRACKET, MUFFLER 389cc				
32	0G8543	1	MUFFLER, 389cc				
33	0G9028	1	GASKET, EXHAUST 389cc				
34	090388	4	SCREW, HHTT M6-1.0 X 12				
35	022145	6	WASHER, FLAT 5/16-M8				
37	039253	4	SCREW, HHC M8-1.25 X 20				
38	045761M	2	STUD, M8-1.25				
39	45771	2	HEX NUT M8-1.25				
44	0H1828B	1	ASSY, HANDLE LH				
45	0G1781	4	CARRIAGE HEAD BOLT M8-1.25				
47	0H1832B	1	ASSY, HANDLE RH				
48	0G8651	2	TIRE, 9.5" DIA RUN FLAT				

NOTE: ALL RECEPTACLES SHOWN FROM REAR, WIRE SIDE.

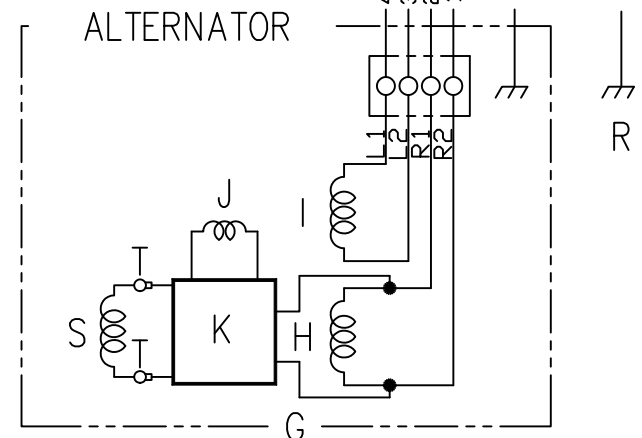
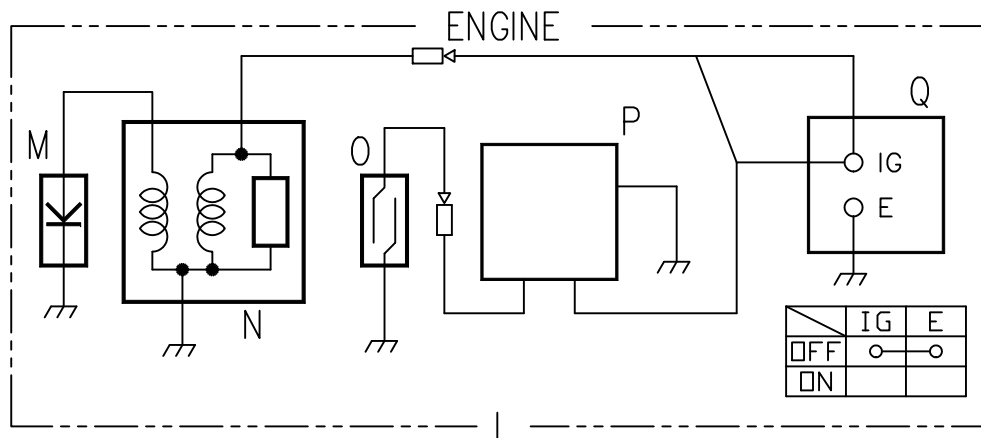


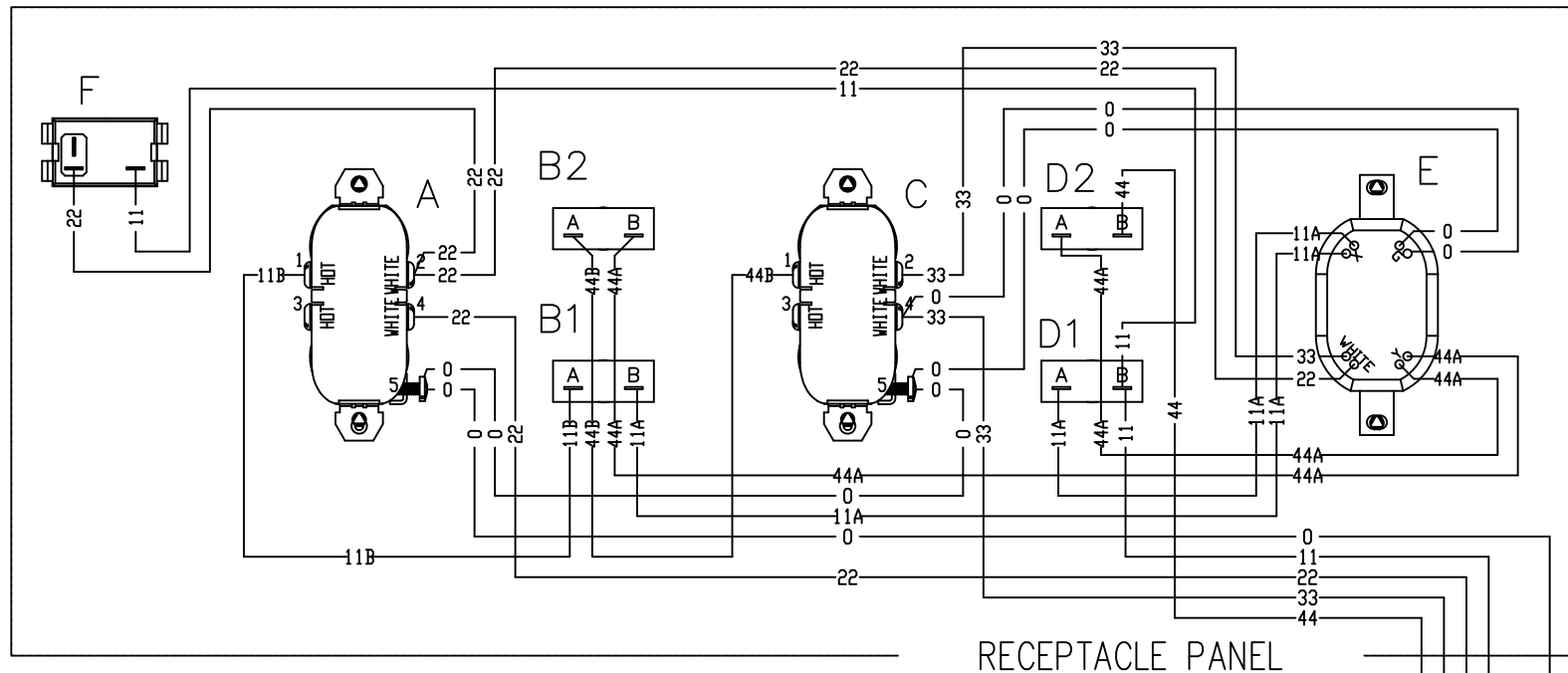
LEGEND:

- A - RECEPTACLE #1 [120VAC 20A NEMA 5-20R]
- B1 - 20AMP CIRCUIT BREAKER #1
- B2 - 20AMP CIRCUIT BREAKER #2
- C - RECEPTACLE #2 [120VAC 20A NEMA 5-20R]
- D1 - *PUSH BUTTOM CIRCUIT BREAKER
- D2 - *PUSH BUTTOM CIRCUIT BREAKER
- E - RECEPTACLE #3 [120/240VAC 30A NEMA L14-30R]
- F - HOUR METER (IF EQUIPED)
- G - ALTERNATOR SECTION
- H - PRIMARY WINDING
- I - PRIMARY WINDING

- J - EXCITATION WINDING
- K - AUTOMATIC VOLTAGE REGULATOR
- L - ENGINE SECTION
- M - SPARK PLUG
- N - IGNITION COIL
- O - LOW OIL LEVEL SWITCH
- P - LOW OIL LEVEL ALARM
- Q - ENGINE RUN/STOP SWITCH
- R - CHASSIS GROUND
- S - ROTOR WINDING
- T - BRUSH ASSEMBLY

* - 5kW AND 5.5kW = 25AMP; 6.5 AND 7.0kW = 30AMP





RECEPTACLE PANEL

LEGEND:

- A - RECEPTACLE #1 [120VAC 20A NEMA 5-20R]
- B1 - 20AMP CIRCUIT BREAKER #1
- B2 - 20AMP CIRCUIT BREAKER #2
- C - RECEPTACLE #2 [120VAC 20A NEMA 5-20R]
- D1 - *PUSH BUTTOM CIRCUIT BREAKER
- D2 - *PUSH BUTTOM CIRCUIT BREAKER
- E - RECEPTACLE #3 [120/240VAC 30A NEMA L14-30R]
- F - HOUR METER (IF EQUIPED)
- G - ALTERNATOR SECTION
- H - PRIMARY WINDING
- I - PRIMARY WINDING

- J - EXCITATION WINDING
- K - AUTOMATIC VOLTAGE REGULATOR
- L - ENGINE SECTION
- M - SPARK PLUG
- N - IGNITION COIL
- O - LOW OIL LEVEL SWITCH
- P - LOW OIL LEVEL ALARM
- Q - ENGINE RUN/STOP SWITCH
- R - CHASSIS GROUND
- S - ROTOR WINDING
- T - BRUSH ASSEMBLY

* - 5kW AND 5.5kW = 25AMP; 6.5 AND 7.0kW = 30AMP

